

WX
M657d
1837

MON MED

c.2

NATIONAL LIBRARY OF MEDICINE

DOCUMENT SECTION

WITHDRAWN
from
LIBRARY
NATIONAL INSTITUTES OF HEALTH

470

J. W. ...

DESIGN

No. 1.

FOR A

MARINE HOSPITAL

ON THE

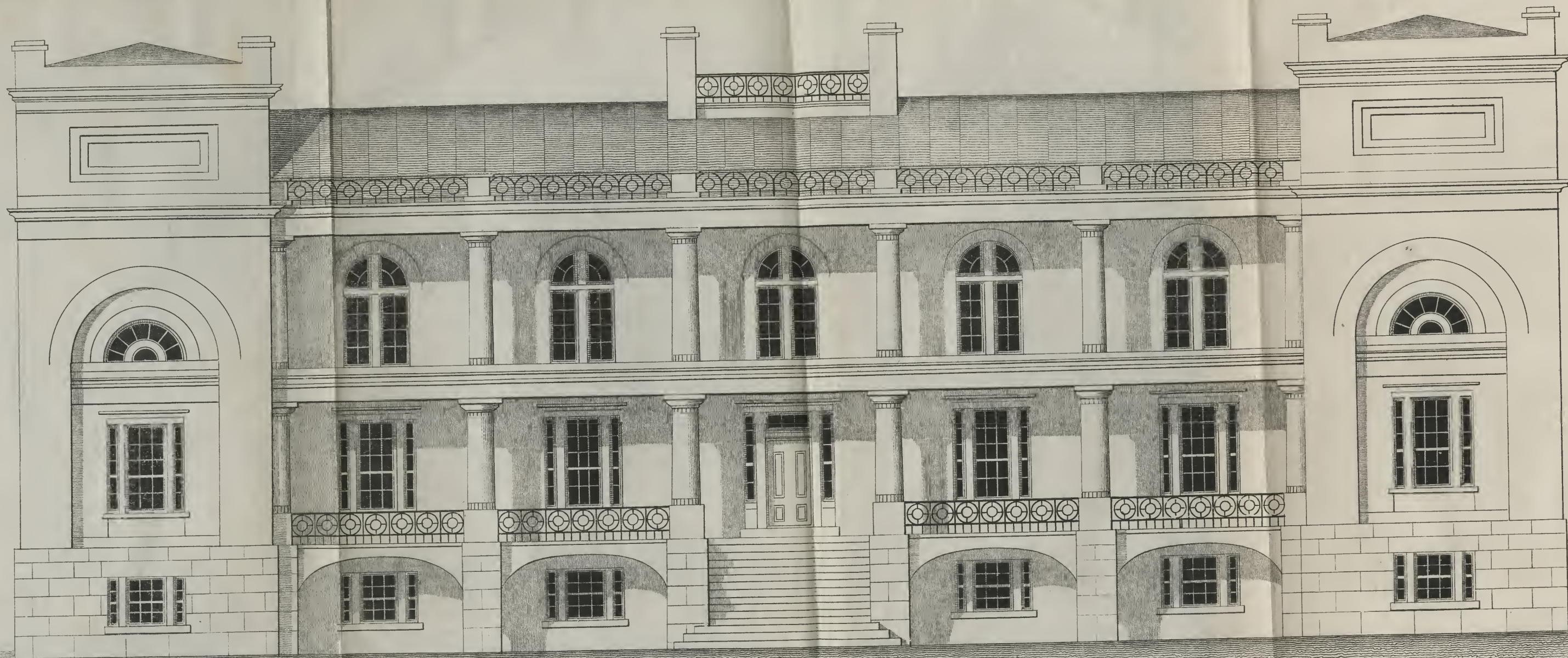
WESTERN WATERS

to accommodate

100

PATIENTS.

Handwritten text at the top of the page, possibly a signature or header, including the word "D. J. ...".

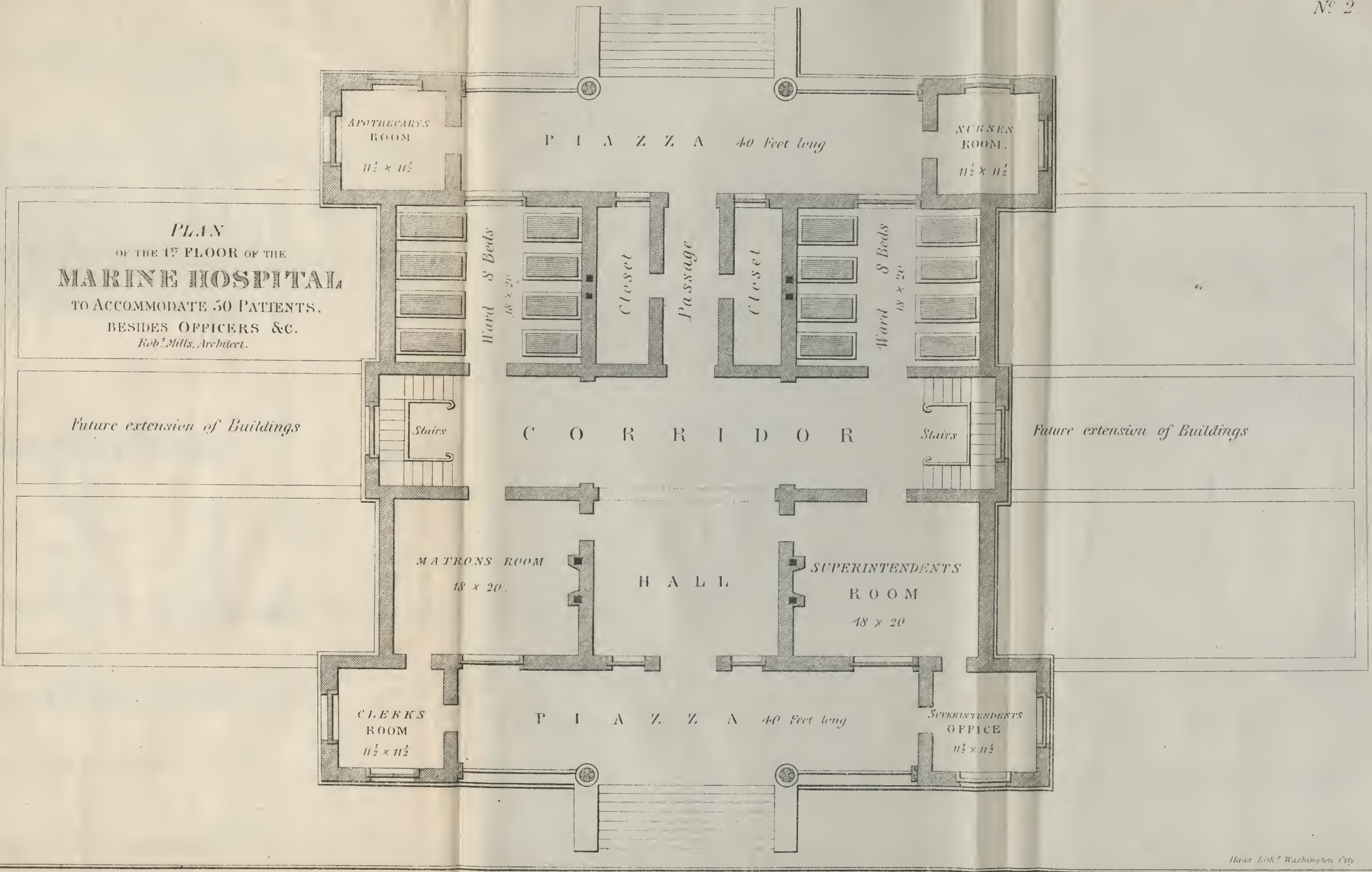


FACADES OF MARINE HOSPITAL TO ACCOMMODATE 100 PATIENTS BESIDES OFFICERS ROOMS &C.

Rob^t. Mills, Architect.

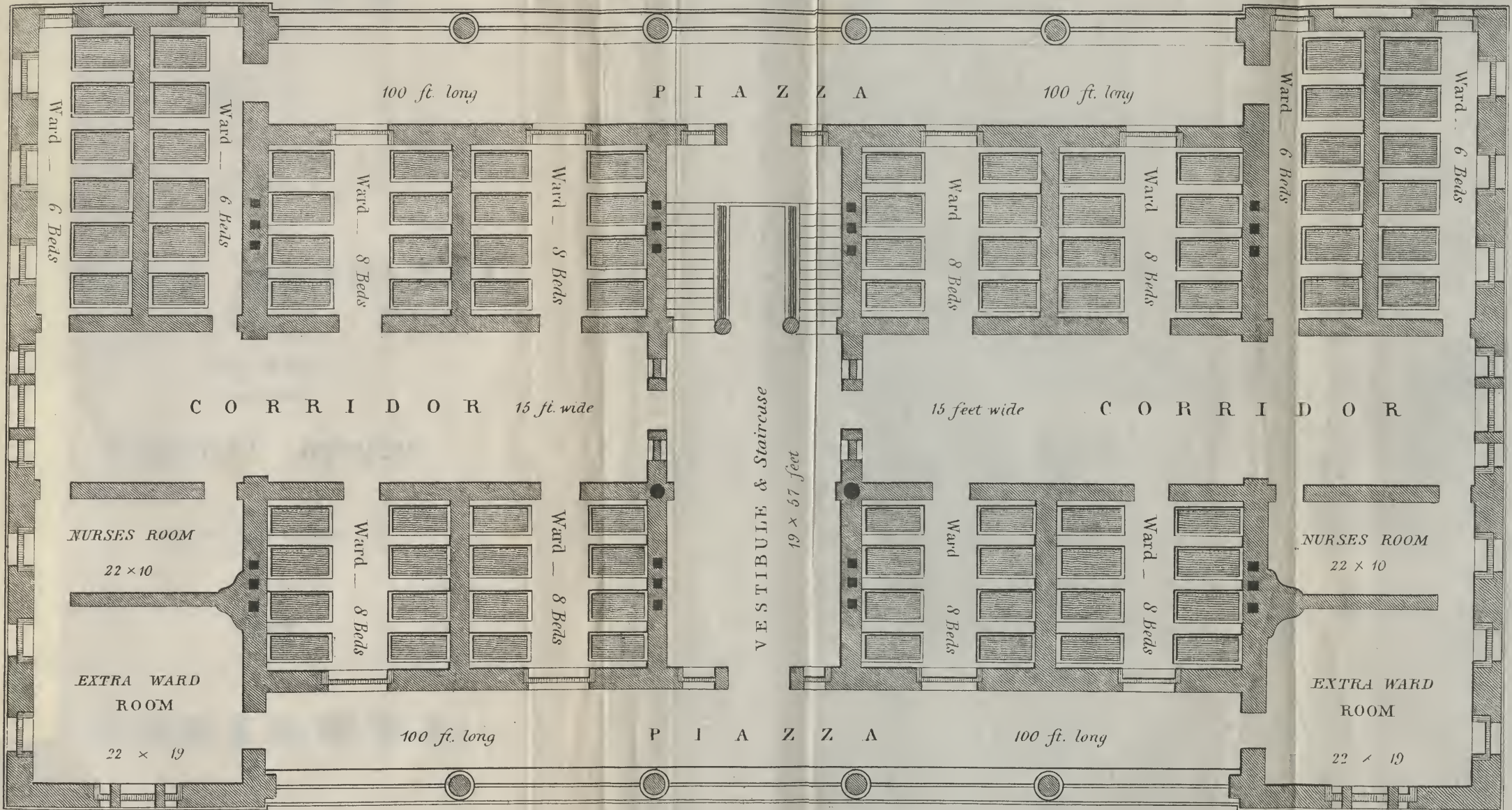
Haas' Lith. Washington City.

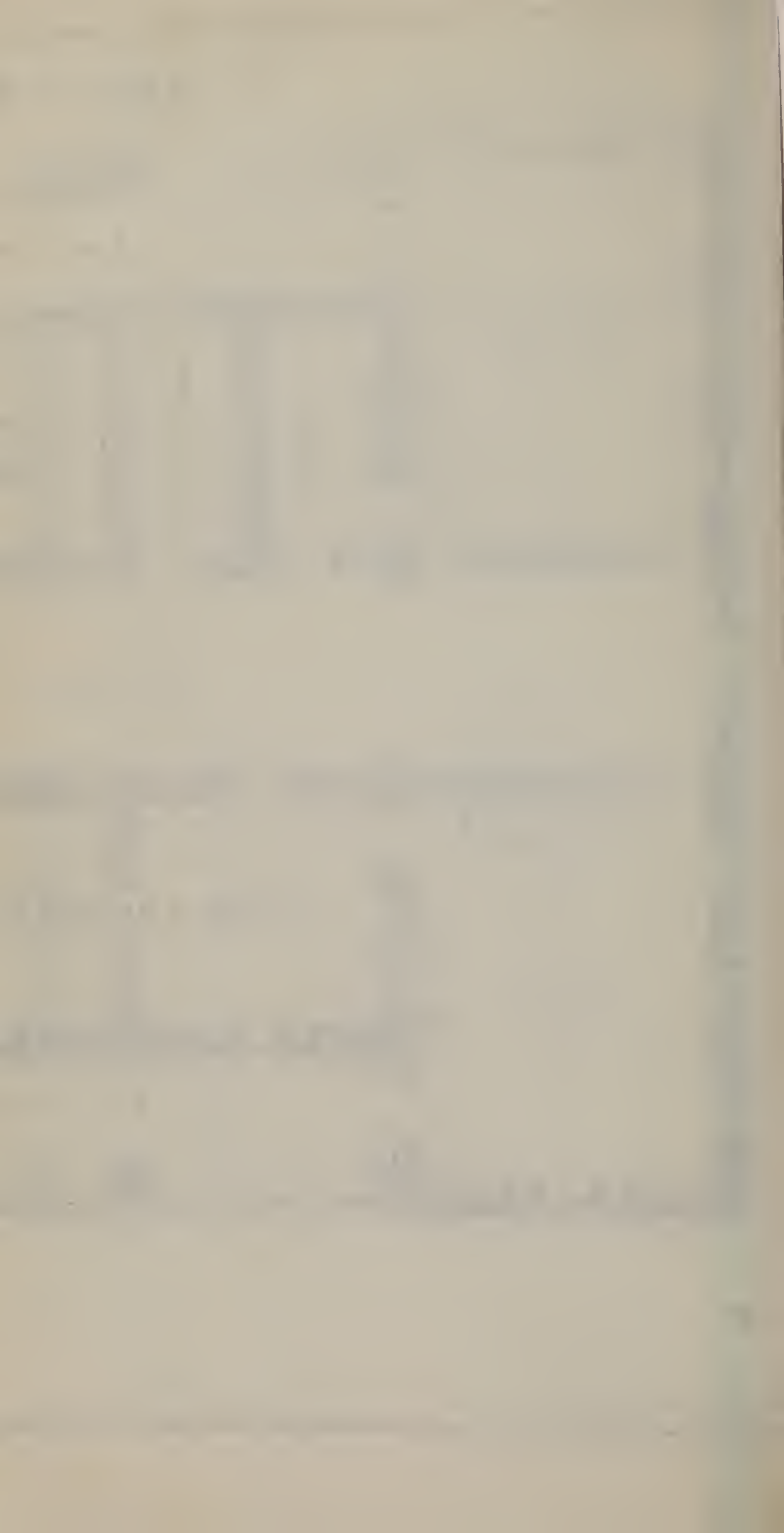
PLAN
 OF THE 1ST FLOOR OF THE
MARINE HOSPITAL
 TO ACCOMMODATE 50 PATIENTS,
 BESIDES OFFICERS &C.
Rob^t. Mills, Architect.



PLAN OF THE SECOND STORY OF THE MARINE HOSPITAL, TO ACCOMMODATE 100 PATIENTS.

Rob^t Mills, Architect.





**Photomount
Pamphlet
Binder**

Gaylord Bros., Inc.

Makers

Syracuse, N.Y.

Pat. No. 877188

NATIONAL LIBRARY OF MEDICINE



NLM 03276937 1